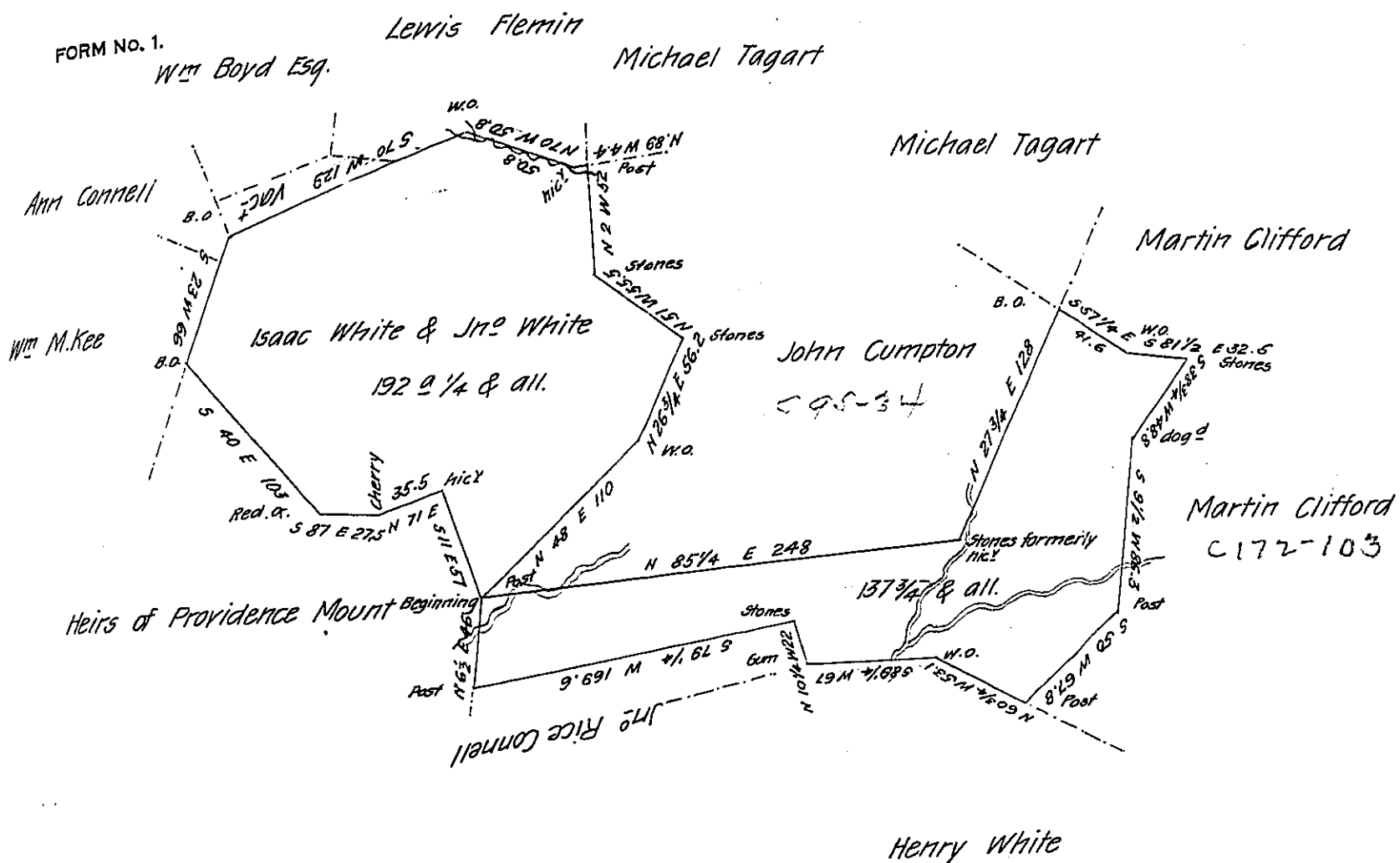


FORM No. 1.



Situate on Mount's Creek in Bullskin Township Fayette County and surveyed the 2^d day of November 1785 in pursuance of a Warrant dated 24th September 1785 but was found to interfere with a Survey made for John Cumption by Col^l Crawford for Colo. Thompson the then Deputy by order of Survey No 125 dated 3^d April 1769 in consequence of which interference the said Isaac and John made application to me to include the piece adjacent represented (it being a vacant piece of Woodland) in some measure to compensate for the loss sustained by the interference. I have indulged them in their request and submit it for your acceptance

P.-

Alexander M. Clean Deputy

Note. the addition was made in June 1795

To Daniel Brodhead Esquire
Surveyor Generale.

IN TESTIMONY that the above is a copy of the original remaining on file in the Department of Internal Affairs of Pennsylvania, made conformably to an Act of Assembly approved the 16th day of February 1833, I have hereunto set my hand and caused the Seal of said Department to be affixed at Harrisburg, this thirteenth day of June 1907

Alexander Hoveck
Secretary of Internal Affairs.